

EXPANSION UPDATE

ORANGEBURG, SOUTH CAROLINA

EPR COMPOUND PLANT - 2021



**THE
OKONITE
COMPANY**

102 Hilltop Road, Ramsey, NJ 07446 201.825.0300 www.okonite.com

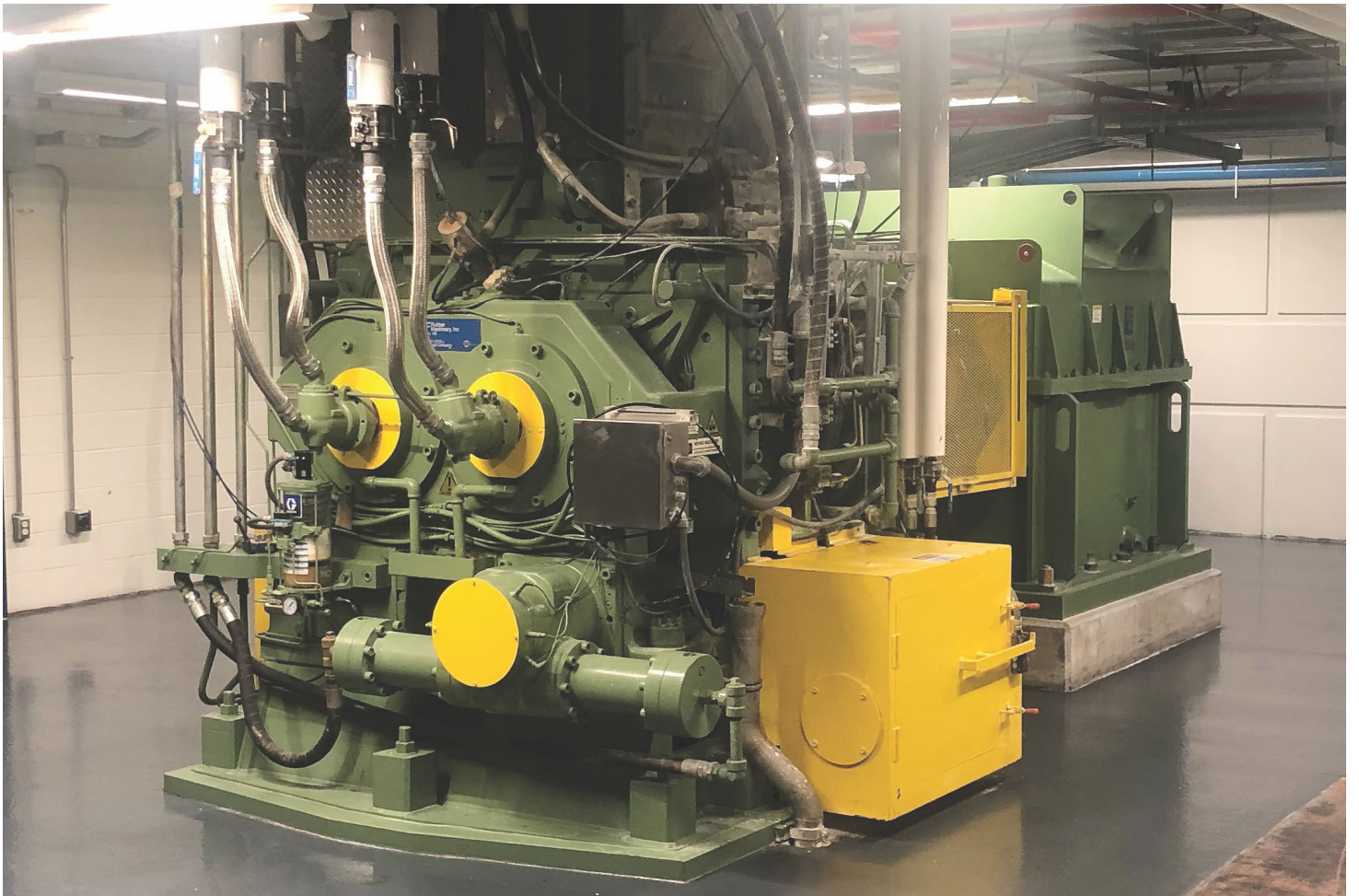
ORANGEBURG, SOUTH CAROLINA -

Okonite's expansion of the Compound Plant and addition of the new Logistical Building were completed in Q1 of 2020, just prior to the COVID-19 pandemic. The added square footage has relieved logistical bottlenecks and improved material handling for both incoming raw materials and outgoing finished compounds. The staff onsite has settled into their new labs, offices, and maintenance areas. The new customer tours will be much more comprehensive than ever before, connecting all compounding operations and showcasing Okonite's commitment to capital improvement, product quality and innovation.

In spite of some equipment deliveries and technical support from contractors and vendors being delayed due to COVID-19, the compound mixing line installation has continued through the diligence of the team of Okonite's Facilities Engineers, Compound Plant Personnel and Corporate and Plant Manufacturing Engineers. Startup trials began in June 2021 and compound has been produced for qualification testing. Our dedicated project members continue to test and refine the line to ensure maximum quality, reliability and efficiency are achieved. Over the next few months we will be vetting all components and continuing the commissioning process while training Compound Plant Personnel on the new line. We welcome our customers to visit us and see this new state-of-the-art facility first hand.



EXPANDED EPR COMPOUND PLANT



District Offices, Manufacturing Plants & Service Centers

Manufacturing Plants



Orangeburg, SC - Compound Facility



Orangeburg, SC - Manufacturing Plant



Richmond, KY - Manufacturing Plant



Santa Maria, CA - Manufacturing Plant



Cumberland, RI - Manufacturing Plant



Paterson, NJ - Manufacturing Plant

Atlanta District Office

(770) 928-9778

E-Mail: atlanta@okonite.com

Baton Rouge District Office

(504) 467-1920

E-Mail: batonrouge@okonite.com

Birmingham District Office

(205) 655-0390

E-Mail: birmingham@okonite.com

Boston District Office

(603) 625-1900

(781) 749-3374

E-Mail: boston@okonite.com

Charlotte District Office

(704) 542-1572

E-Mail: charlotte@okonite.com

Chicago District Office

(630) 961-3100

E-Mail: chicago@okonite.com

Cleveland District Office

(330) 926-9181

E-Mail: cleveland@okonite.com

Dallas District Office

(940) 383-1967

E-Mail: dallas@okonite.com

Denver District Office

(303) 772-3517

E-Mail: denver@okonite.com

Houston District Office & Service Center

(281) 821-5500

E-Mail: houston@okonite.com

Kansas City District Office & Service Center

(913) 422-6958

E-Mail: kansascity@okonite.com

Los Angeles District Office

(562) 590-3070

E-Mail: losangeles@okonite.com

Minneapolis District Office

(763) 432-3818

E-Mail: minneapolis@okonite.com

New Orleans District Office & Service Center

(504) 467-1920

E-Mail: neworleans@okonite.com

New York District Office

NJ (973) 742-8040

NY (212) 239-0660

E-Mail: newyork@okonite.com

Philadelphia District Office

(302) 318-2054

E-Mail: philadelphia@okonite.com

Phoenix District Office

(480) 838-8596

E-Mail: phoenix@okonite.com

Pittsburgh Service Center

(724) 899-4300

E-Mail: pittsburgh@okonite.com

Portland District Office & Service Center

(503) 598-0598

E-Mail: portland@okonite.com

Richmond District Office

(302) 318-2054

E-Mail: richmond-district@okonite.com

Salt Lake District Office

(801) 262-1993

E-Mail: saltlake@okonite.com

San Francisco District Office

(925) 830-0801

E-Mail: sanfrancisco@okonite.com

St. Louis District Office

(314) 770-9070

E-Mail: stlouis@okonite.com

Tampa District Office

(813) 627-9400

E-Mail: tampa@okonite.com

International Sales

(281) 821-5500

E-Mail: houston@okonite.com

Service Centers



Houston, TX



Kansas City, KS



New Orleans, LA



Portland, OR



Pittsburgh, PA

Corporate HDO



Ramsey, NJ



THE OKONITE COMPANY

102 Hilltop Road, Ramsey, NJ 07446 • 201.825.0300 • www.okonite.com



Printed on post consumer paper

05694